



HUSKY[®]

Portable Containment
The Leader of the Pack

Primary & Secondary Containment Products

Containment Berms, Bladder Tanks and More

800-260-9950 • www.huskyportable.com

Spill Berms (Any Size or Dimension)

Freedom Berms	3-5
Super Berm Series I (drive-through end walls, multi-layer floor)	3
Freedom Berm Series II (drive-through end walls, air side walls)	4
Freedom Berm Series III (drive-through, self-supporting side/end walls).....	4
Freedom Berm Series IV (drive-through end walls, aluminum angle side walls)	5
Patriot Berm (aluminum angle bracket, side/end walls).....	5
Liberty Berm.....	6
Eagle Berms	6-7
Eagle I Foam Wall Berm.....	6
Eagle II Air Wall Berm.....	7
Eagle III Berm	7
XR® Walkmat.....	8
Wash Bays	8



Containment Pools

Containment Pools (25 gal - 500 gal).....	9
Mini Basins (2' x 2', 3' x 3', 4' x 4', 5' x 5', custom sizes)	9



Bladder Tanks

Bladder Tanks (25 gal - 25,000 gal).....	10-11
--	-------



Other Containment Products

Decontamination Pools	12-13
Decontamination Showers.....	12
Folding Frame Decontamination Pools.....	12
Air Wall Decontamination Pools.....	13
Self-Supporting Decontamination Pools.....	13
Water or Chemical Waste Bladder Reservoirs.....	13
Drain Covers	13
Water Dikes.....	14
Folding Frame Tanks.....	14
Self-Supporting Tanks.....	15
AQUA Tanks.....	15



Find a product your business needs? Contact us today!

www.huskyportable.com

7202 SE International Ct, PO Box 3404, Bartlesville, OK 74006

Phone: 918-333-2000 | Toll Free: 800-260-9950 | Fax: 918-333-2004 | Email: sales@huskyportable.com

Super Berm (Series I)

Husky's patented (US Patent #9,243,415) "Super Berm" offers the most revolutionary heavy-duty berm **floor** available in the secondary containment industry with high and heavy traffic at the forefront of the design. The Super Berm is a true drive through model berm with a **multi-layered floor** that will stand up to extreme conditions. The standard Super Berm is based off of our Freedom Series IV berm which benefits from **aluminum "L" brackets** for side wall support saving valuable footprint space. Our unique multi-layered floor design gives maximum protection from the surface it is deployed on and also any vehicle traffic on the top side. The floor design also helps protect the principal of what a berm is supposed to do...contain spills to protect the environment. Single layer berms often tear or the integrity of the berm is compromised with holes and other damage. Super Berms give many times the durability of standard single layer berms.

- Drive-through, in and out. Easy set up.
- Self-supporting end walls. No inflation!
- Multi-layered floor for increased strength & durability
- Aluminum "L" brackets for side wall support
- Materials: XRs, all Urethanes, PVCs, EXLON®
- Optional ground covers, tread pads and track belting
- Field repair kits & in-house repairs
- 3 year manufacturer's warranty
- Super Berm floor available in any style berm



Husky's Super Berms can be ordered utilizing our other berm designs. Call us today for more details at 800-260-9950.

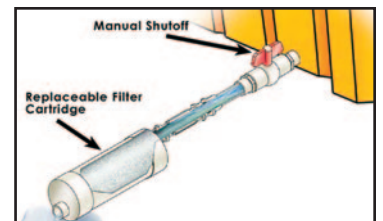


(Based on 30 oz. per square yard material) (The standard berm material is XR-5 8130 unless otherwise specified)

Part No.	Size	Folded Size	Ship Size	Berm Weight	Ship Weight
HSBIV-10101X30	10' x 10' x 1'	38" x 40" x 20"	40" x 48" x 22"	180 lbs.	230 lbs.
HSBIV-12121X30	12' x 12' x 1'	38" x 44" x 20"	40" x 48" x 22"	237 lbs.	287 lbs.
HSBIV-12261X30	12' x 26' x 1'	40" x 46" x 40"	40" x 48" x 42"	449 lbs.	504 lbs.
HSBIV-12361X30	12' x 36' x 1'	40" x 60" x 44"	40" x 60" x 46"	625 lbs.	695 lbs.
HSBIV-12501X30	12' x 50' x 1'	42" x 72" x 48"	42" x 72" x 50"	819 lbs.	899 lbs.
HSBIV-14541X30	14' x 54' x 1'	48" x 90" x 48"	48" x 90" x 50"	989 lbs.	1089 lbs.

Hydro-Carbon Filtration

- Protects against contaminated liquids entering the environment
- Rain water is no longer a problem; clean water will drain through the filter
- Manual ball valve shuts off flow for changing filters
- Additional filter cartridges optional
- Hydro-carbon filters available in any style berm



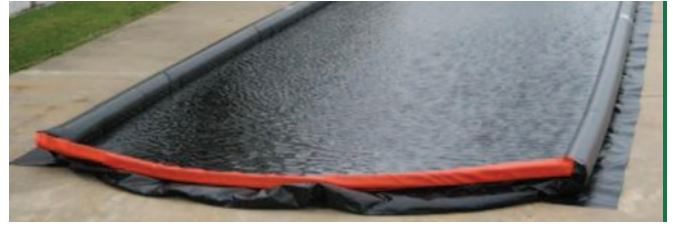
Berms that set up in less than a minute!

Husky Portable Containment berms can be manufactured to your size and capacity requirements.

If the size of berm you are looking for is not on our standard size list, call us and we will get you a quote the same day!

Freedom Drive Through Berm (Series II)

- Drive-through, in and out
- Air chamber side walls with pressure relief valves
- Self-supporting end walls with HR foam collar
- One-piece construction
- No loose parts. No assembly. Easy set up (unfold & go).
- Materials: XRs, all Urethanes, PVCs, EXLON®
- Optional ground covers, tread pads and track belting
- Field repair kits
- In-house repairs
- 3 year manufacturer's warranty
- Our patent-pending Super Berm floor is available in any berm style. See page 2 for details.



The Series II all-fabric berm folds easily and weighs less than a traditional berm, allowing for minimal storage requirements. Husky will manufacture custom berms in any size. Call for a quote!

(Based on 30 oz. per square yard material) (The standard berm material is XR-5 8130 unless otherwise specified)

Part No.	Size	Folded Size	Berm Weight	Ship Size	Ship Weight
DSII-10101X30	10' x 10' x 1'	22" x 28" x 6"	68 lbs.	40" x 48" x 11"	108 lbs.
DSII-12121X30	12' x 12' x 1'	24" x 30" x 8"	84 lbs.	40" x 48" x 11"	124 lbs.
DSII-12261X30	12' x 26' x 1'	30" x 34" x 9"	149 lbs.	40" x 48" x 15"	189 lbs.
DSII-12361X30	12' x 36' x 1'	34" x 36" x 12"	184 lbs.	40" x 48" x 18"	224 lbs.
DSII-12501X30	12' x 50' x 1'	40" x 40" x 18"	242 lbs.	40" x 48" x 22"	282 lbs.
DSII-14541X30	14' x 54' x 1'	40" x 46" x 24"	290 lbs.	40" x 48" x 30"	330 lbs.
DSII-15501X30	15' x 50' x 1'	40" x 46" x 24"	290 lbs.	40" x 48" x 30"	330 lbs.
DSII-15661X30	15' x 66' x 1'	40" x 48" x 36"	355 lbs	40" x 48" x 42"	395 lbs.

Freedom Drive Through Berm (Series III)

- Drive-through, in and out
- Self-supporting side and end walls. No inflation!
- HR polyurethane foam-filled flotation collar
- Optional air chamber flotation collar for smaller storage
- Rigid supports give the walls greater stability and strength
- One-piece construction
- No loose parts. No assembly. Easy set up (unfold & go).
- Materials: XRs, all Urethanes, PVCs, EXLON®
- Optional ground covers, tread pads and track belting
- Field repair kits and in-house repairs
- 3 year manufacturer's warranty
- Our patent-pending Super Berm floor is available in any berm style. See page 2 for details.



The Series III berm can be driven over from any angle. No more damaged berms because you drove over a side wall! All Husky spill berms are tested to assure you have the highest quality berm leaving our plant. They perform when you need them to.

Husky will manufacture any size custom berm from 2' x 2' up to 100' x 100' and beyond. Call for a quote.

(Based on 30 oz. per square yard material) (The standard berm material is XR-5 8130 unless otherwise specified)

Part No.	Size	Folded Size	Berm Weight	Ship Size	Ship Weight
DSIII-10101X30	10' x 10' x 1'	34" x 34" x 20"	68 lbs.	40" x 48" x 26"	103 lbs.
DSIII-12121X30	12' x 12' x 1'	34" x 40" x 22"	83 lbs.	40" x 48" x 28"	118 lbs.
DSIII-12261X30	12' x 26' x 1'	38" x 48" x 32"	143 lbs.	40" x 48" x 38"	178 lbs.
DSIII-12361X30	12' x 36' x 1'	38" x 58" x 36"	187 lbs.	40" x 60" x 42"	222 lbs.
DSIII-12501X30	12' x 50' x 1'	40" x 44" x 36"	248 lbs.	40" x 60" x 48"	283 lbs.
DSIII-14541X30	14' x 54' x 1'	40" x 46" x 36"	294 lbs.	40" x 48" x 60"	334 lbs.
DSIII-15501X30	15' x 50' x 1'	40" x 46" x 36"	294 lbs.	40" x 48" x 60"	334 lbs.
DSIII-15661X30	15' x 66' x 1'	40" x 60" x 42"	367 lbs.	40" x 48" x 60"	407 lbs.

Freedom Berm (Series IV)

- 6061-T6 alum angle brackets bent to 90°. Heavy duty!
- Side wall pockets 2' apart that accept the angle brackets
- Self-supporting end walls with HR foam flotation collar. Self-rising! No inflation!
- Easy set up, quick assembly
- Separate storage bags for berm & angle brackets
- Materials: XRs, all Urethanes, PVCs, EXLON®
- Optional ground covers, tread pads and track belting
- Field repair kits & in-house repairs
- Our patent-pending Super Berm floor is available in any berm style. See page 2 for details.



Husky Series IV berms are the perfect solution when manpower is at a minimum. Having the angle brackets as a separate piece means a lighter berm to handle. It takes less than 10 minutes to set up a 12'x50' berm.

(Based on 30 oz. per square yard material) (The standard berm material is XR-5 8130 unless otherwise specified)

Part No.	Size	Folded Size	Berm Weight	Brackets Weight	Ship Size	Ship Weight
DSIV-10101X30	10' x 10' x 1'	22" x 28" x 8"	43 lbs.	18 lbs.	25" x 22" x 35"	66 lbs. (UPS)
DSIV-12121X30	12' x 12' x 1'	24" x 30" x 10"	56 lbs.	22 lbs.	40" x 48" x 15"	113 lbs.
DSIV-12261X30	12' x 26' x 1'	30" x 34" x 12"	100 lbs.	46 lbs.	40" x 48" x 17"	181 lbs.
DSIV-12361X30	12' x 36' x 1'	34" x 36" x 14"	131 lbs.	64 lbs.	40" x 48" x 19"	230 lbs.
DSIV-12501X30	12' x 50' x 1'	40" x 40" x 22"	175 lbs.	89 lbs.	40" x 48" x 27"	299 lbs.
DSIV-14541X30	14' x 54' x 1'	40" x 46" x 28"	214 lbs.	96 lbs.	40" x 48" x 32"	345 lbs.
DSIV-15501X30	15' x 50' x 1'	40" x 46" x 28"	214 lbs.	96 lbs.	40" x 48" x 32"	369 lbs.
DSIV-15661X30	15' x 66' x 1'	40" x 47" x 38"	272 lbs.	117 lbs.	40" x 48" x 43"	424 lbs.

Patriot Berm (Aluminum Angle Bracket Berms)

- 6061-T6 alum angle brackets bent to 90°. Heavy duty!
- Outside pockets 2' or less apart to accept angle brackets
- Easy set up & quick assembly (set up a 12'x50' berm with two people in less than 10 minutes)
- Remove brackets for ingress & egress in less than one minute
- Separate storage bags for the berm and angle brackets
- Patriot berms are lighter to handle than one-piece berms
- Materials: XRs, all Urethanes, PVCs, EXLON®
- Optional ground covers, tread pads and track belting
- Field repair kits and in-house repairs
- 3 year manufacturer's warranty
- Our patent-pending Super Berm floor is available in any berm style. See page 2 for details.



Aluminum Angle Berms are great for storing fuel or chemical tankers, transformers, chemical tanks, waste drums and for decontamination and equipment wash down.

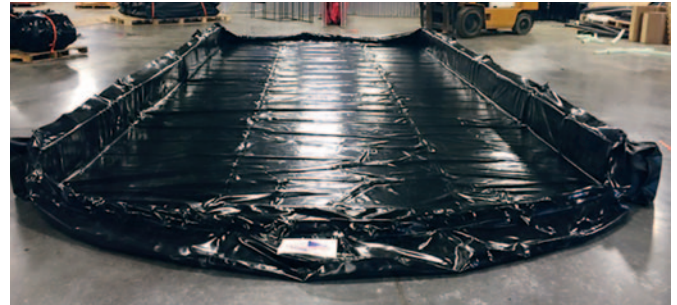
(Based on 30 oz. per square yard material) (The standard berm material is XR-5 8130 unless otherwise specified)

Part No.	Size	Folded Size	Berm Weight	Brackets Weight	Ship Size	Ship Weight
P-10101X30	10' x 10' x 1'	22" x 28" x 6"	37 lbs.	39 lbs.	25" x 9" x 35"	81 lbs. (UPS)
P-12121X30	12' x 12' x 1'	24" x 30" x 8"	50 lbs.	46 lbs.	40" x 48" x 11"	131 lbs.
P-12261X30	12' x 26' x 1'	30" x 34" x 9"	95 lbs.	71 lbs.	40" x 48" x 15"	201 lbs.
P-12361X30	12' x 36' x 1'	34" x 36" x 12"	124 lbs.	89 lbs.	40" x 48" x 18"	248 lbs.
P-12501X30	12' x 50' x 1'	40" x 40" x 18"	173 lbs.	113 lbs.	40" x 48" x 22"	321 lbs.
P-14541X30	14' x 54' x 1'	40" x 46" x 24"	210 lbs.	124 lbs.	40" x 48" x 30"	369 lbs.
P-15501X30	15' x 50' x 1'	40" x 46" x 24"	210 lbs.	117 lbs.	40" x 48" x 30"	369 lbs.
P-15661X30	15' x 66' x 1'	40" x 47" x 36"	268 lbs.	149 lbs.	40" x 48" x 42"	452 lbs.

Liberty Berm

Husky's Liberty Berms are designed with lightweight handling in mind. The separate foam logs are light and easily and quickly strap into the liner's side walls. The end walls are a self-supporting drive-through type. We also build the Liberty Berms with foam logs utilized on both side and end walls. With this version, the end wall logs must be removed before entering the berm then replaced. When the foam logs are separate, the liner is going to be as light as possible. Liberty Berms are very durable and very sturdy when set up. Optional tread pads, track belting and ground covers are available. Ask for our patent-pending Super Berm floor design!

- Liner & foam logs are separate for easier handling
- Easy set up. Strap in foam logs, & you're ready!
- Materials: XRs, all Urethanes, PVCs, EXLON®
- Optional ground covers, tread pads and track belting
- Field repair kits and in-house repairs
- 3 year manufacturer's warranty
- Our patent-pending Super Berm floor is available in any berm style. See page 2 for details.



Eagle Berm (Foam Wall Berms)

- Drive-through, in and out with foam wall construction
- Low profile (3-4" side wall height)
- Foam inserts are 5' long
- Cutouts in the corners & every 5' down sides & ends on bottom of berm to accept the foam inserts
- Straps in the corners & every 10' down the sides
- Easy set up
- Storage bags included
- Materials: 22 oz, 30 oz, & 40 oz PVC, XRs, 40 oz Urethane, EXLON®
- Optional ground covers, tread pads and track belting
- Field repair kits and in-house repairs
- 3 year manufacturer's warranty
- Our patent-pending Super Berm floor is available in any berm style. See page 2 for details.



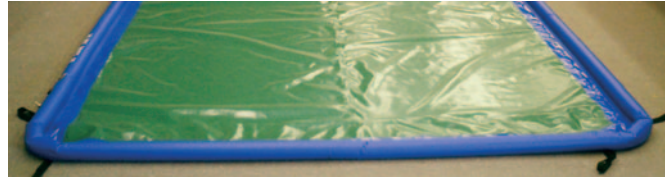
Husky Eagle berms are designed with a low profile wall height for easy drive-through operations. These make a great maintenance berm and will capture any waste liquid coming off machinery from drips and spills to overall maintenance.

(Based on 40 oz. per square yard material) (The standard berm material is 40 oz. PVC unless otherwise specified)

Part No.	Size	Folded Size	Berm Weight	Foam Weight	Ship Size	Ship Weight
E-10153V40	10' x 15' x 3"	24" x 34" x 6"	58 lbs.	5 lbs.	40" x 60" x 16"	98 lbs.
E-10203V40	10' x 20' x 3"	30" x 40" x 8"	75 lbs.	5 lbs.	40" x 60" x 16"	116 lbs.
E-10253V40	10' x 25' x 3"	34" x 44" x 10"	92 lbs.	6 lbs.	40" x 60" x 18"	133 lbs.
E-12303V40	12' x 30' x 3"	38" x 44" x 12"	124 lbs.	7 lbs.	40" x 60" x 24"	165 lbs.
E-12403V40	12' x 40' x 3"	38" x 46" x 18"	166 lbs.	8 lbs.	40" x 60" x 30"	208 lbs.
E-12503V40	12' x 50' x 3"	40" x 46" x 26"	205 lbs.	9 lbs.	40" x 60" x 38"	249 lbs.
E-12703V40	12' x 70' x 3"	40" x 48" x 36"	284 lbs.	11 lbs.	40" x 60" x 46"	330 lbs.

Eagle II Berm (Air Wall Berms)

- Drive through, in and out
- Wall heights up to 24". Over 6" heights are not drive through models
- Continuous air wall construction
- Low profile (3-4" side wall height)
- Schrader valve, pressure relief valve, check valve
- Straps in the corners & every 10' down the sides
- Easy set up & storage (storage bag included)
- Materials: 22 oz, 30 oz, & 40 oz PVC, XRs, 40 oz Urethane, EXLON®
- Optional ground covers, tread pads and track belting
- Field repair kits & in-house repairs
- 3 year manufacturer's warranty
- Our patent-pending Super Berm floor is available in any berm style. See page 2 for details.



Husky air wall berms have a continuous air chamber that allows the air to disperse throughout the chamber when driving in and out of the berm. This design, along with the pressure relief valve, eliminates blowouts.

(Based on 40 oz. per square yard material) (The standard berm material is 40 oz. PVC unless otherwise specified)

Part No.	Size	Folded Size	Berm Weight	Ship Size	Ship Weight
EII-10153V40	10' x 15' x 4"	24" x 34" x 6"	58 lbs.	25" x 9" x 35"	62 lbs. (UPS)
EII-10203V40	10' x 20' x 4"	30" x 40" x 8"	75 lbs.	40" x 48" x 14"	110 lbs.
EII-10253V40	10' x 25' x 4"	34" x 44" x 10"	92 lbs.	40" x 48" x 16"	127 lbs.
EII-12303V40	12' x 30' x 4"	38" x 44" x 12"	124 lbs.	40" x 48" x 18"	159 lbs.
EII-12403V40	12' x 40' x 4"	38" x 46" x 18"	166 lbs.	40" x 48" x 24"	201 lbs.
EII-12503V40	12' x 50' x 4"	40" x 46" x 26"	205 lbs.	40" x 48" x 32"	240 lbs.
EII-12703V40	12' x 70' x 4"	40" x 48" x 36"	284 lbs.	45" x 48" x 42"	319 lbs.

Eagle III Berm

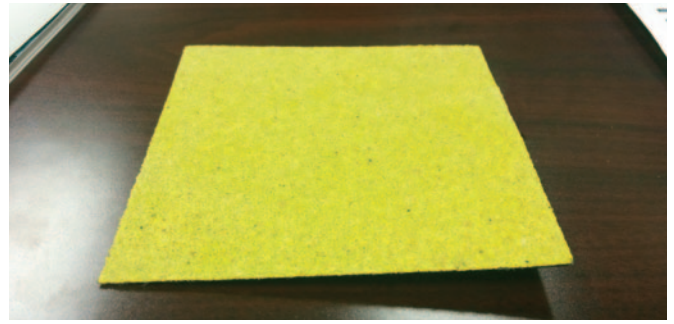
Eagle III Berms are designed with foam walls on both ends and side walls. Our foam is a very high quality foam that can be stepped on, run over and folded many times and still retain its shape and integrity. Eagle III Berms are great for spill containment or wash down of many different types of equipment.

- Drive in/ drive out with no disassembly
- Continuous foam wall construction
- NO LOOSE pieces
- 3" – 12" wall height
- Easy set up. Unfold and start using
- Materials: 22 oz., 30 oz. and 40 oz. PVC, XRs, Urethanes, EXLON®
- Optional ground covers, tread pads and track belting
- Field repair kits and in-house repairs
- Our patent-pending Super Berm floor is available in any berm style. See page 2 for details.



XR® Walkmat

- Enhances safety in high foot-traffic areas
- Slip-resistant composite applied to XR-5-reinforced membrane
- Exceeds OSHA and ADA standards
- XR® Walkmat strips can be used to define paths to increase accessibility on job sites
- Multilayer resin system with embedded grit
- XR Geomembrane
- High chemical resistance
- Dimensional stability inhibits growth & shrinkage
- Only 0.095" thick
- Superior puncture resistance: 240 lbs
- Break strength: 400 lbs/in
- XR® Walkmat can be welded into your berm permanently or laid in loosely whenever needed



The Husky XR® Walkmat underwent rigorous testing using the Brungraber Slip-Tester. We are proud to report that the XR® Walkmat exceeded both OSHA & ADA standards.

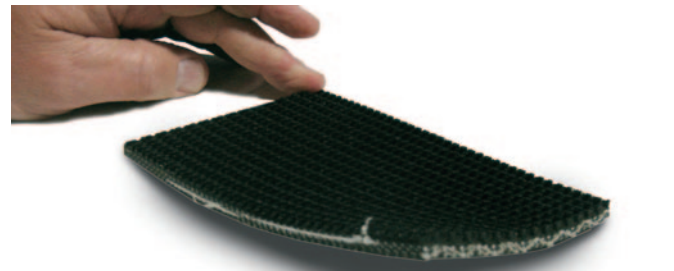
Tread Pads

- Purchased loose or welded to your berm floor
- Provides additional strength to the floor of your berm in the vehicle track areas
- Standard size is 30" wide by the length of the berm
- Can be cut to different widths
- 22 oz. per square yard
- Several colors available, yellow is standard.



Track Belting

- 120# non slip belting material
- Loose pieces, two per berm
- 3' wide to 6' wide pieces, precut to the length of your berm
- Extreme protection to your berm floor in the track vehicle areas
- Easily rolls up for storing



Wash Bay

- Based on our portable folding frame tank line
- Useful in washing down equipment, parts, machinery, etc.
- Standard equipped with three sides taller than the fourth side
- Liner materials available in many thicknesses and weights
- Folds down to 8" wide x length and height
- Available in aluminum or steel framework
- Liners are replaceable
- Wash Bays can be built to any size specifications



Husky Portable Containment custom builds whatever size, shape or configuration of wash bay that suits your needs. There are several material and color options to choose from. Call us today with your requirements and we will get you a quote asap.

Containment Pool (25-500 gal)

- Self-supporting side wall
- Round base & top
- One-piece construction
- Polyethylene foam flotation collar
- Easy set up. Unfold & go!
- Compact storage (storage bag included)
- Can be used over & over
- Materials: 18 & 22 oz PVC, XR-5
- Field repair kits & in-house repairs
- 3 year manufacturer's warranty



Husky containment pools can be used for drips or spills and are also excellent decon pools. Folds down to a compact storage size.

(Based on 22 oz. per square yard material) (The standard berm material is 22 oz. PVC unless otherwise specified)

Part No./Gal	Base Dia.	Top Dia.	Height	Folded Size	Weight	Ship Size	Ship Weight
HCP-25	32"	22"	12"	15" x 18" x 6"	5 lbs.	15" x 9" x 22"	8 lbs. (UPS)
HCP-50	40"	30"	12"	15" x 22" x 8"	7 lbs.	15" x 9" x 22"	10 lbs. (UPS)
HCP-100	56"	46"	12"	20" x 26" x 8"	9 lbs.	22" x 9" x 32"	13 lbs. (UPS)
HCP-150	68"	56"	12"	20" x 30" x 8"	12 lbs.	22" x 9" x 32"	16 lbs. (UPS)
HCP-200	78"	66"	12"	24" x 32" x 8"	14 lbs.	25" x 9" x 35"	19 lbs. (UPS)
HCP-300	90"	72"	14"	24" x 34" x 9"	19 lbs.	25" x 9" x 35"	24 lbs. (UPS)
HCP-500	96"	78"	18"	25" x 35" x 9"	29 lbs.	25" x 9" x 35"	34 lbs. (UPS)

Mini Basin

- Economical! Can be used over & over.
- Self-supporting side wall & one-piece construction
- Easy set up. Unfold & go!
- Compact storage (storage strap included)
- Materials: 18 & 22 oz PVC, XR-5
- Field repair kits & in-house repairs
- 3 year manufacturer's warranty



(Based on 22 oz. per square yard material) (The standard berm material is 22 oz. PVC unless otherwise specified)

Part No./Gal	Open Size	Folded Size	Weight	Ship Size	Ship Weight
HMB-22	2' x 2' x 4"	4" dia. x 2'	2 lbs.	6" x 6" x 26"	3 lbs. (UPS)
HMB-33	3' x 3' x 4"	4" dia. x 3'	3 lbs.	6" x 6" x 38"	4 lbs. (UPS)
HMB-44	4' x 4' x 4"	5" dia. x 4'	5 lbs.	6" x 6" x 50"	5 lbs. (UPS)
HMB-55	5' x 5' x 4"	6" dia. x 5'	6 lbs.	8" x 8" x 62"	8 lbs. (UPS)
HMB-66	6' x 6' x 4"	6" dia. x 6'	9 lbs.	8" x 8" x 74"	11 lbs. (UPS)

Husky containment pools and mini basins are designed for light spill and drip protection. They are great for portable generators, portable pumps, under fuel tanks, decon, & many other practical uses.

Call today for your quantity discounts!

Bladder Tank

- Sizes 25 gal to 20,000 gal
- Manufactured to meet military or commercial specifications
- Materials: XRs, PVCs, Urethanes (MIL spec)
- Fittings: PVC (NSF 61), aluminum, stainless steel, brass
- Fitting sizes from .75" - 6"
- All stainless steel hardware on all Husky bladders
- Access panels
- Maneuvering straps near the corners and approximately every 5' down the sides
- Flames arrestors
- Double "T" style vents and mushroom vents
- Stringent quality-control department. All Husky bladders are tagged, signed, & dated with inspection labels.
- Optional ground covers & sunscreens in various weights
- Field repair kits and in-house repairs
- Computer design, Solid Works
- 3 year manufacturer's warranty
- 1 year warranty on all workmanship with extended warranties available
- Call for bladder berm pricing!



Husky Portable Containment will manufacture custom bladder or pillow tanks to meet your requirements and specifications. We can build them taller, shorter, wider, or longer with virtually any fitting and valve configuration you can come up with. You tell us what you need and our design team will create your custom bladder tank in Auto Cad. Find our Bladder Tank Design form online at Huskyportable.com

Material Options: PVC, 22, 30 and 40 oz / XR-5, 30, 38 and 46 oz (including potable XR-5) / XR-3PW, 22, 30 oz (potable) / All Urethanes (Military Spec)

All bladder tank part numbers begin with BT and are determined by size, material type and ounces per square yard. Example: BT-5000V40, this designates a 5000 gallon bladder built with 40 oz PVC.

Part No.	Capacity	Filled Size	Folded Size	Weight	Ship Weight	
	US Gal. / Imp Gal. / Liters	Inches / Meters	Inches / Meters	lbs. / kg.	lbs. / kg.	
BT-25V30	25 / 21 / 95	24" x 36" x 8" / .6 x .9 x .2	14 x 18 x 6 / .4 x .5 x .15	10 / 4.5	14 / 6.4	*
BT-50V30	50 / 42 / 189	36" x 52" x 9" / .9 x 1.3 x .2	15 x 21 x 7 / .4 x .5 x .15	14 / 6.4	18 / 8.2	*
BT-75V30	75 / 63 / 284	42" x 54" x 9" / 1 x 1.4 x .2	20 x 22 x 7 / .5 x .6 x 1.5	16 / 7.3	20 / 9	*
BT-100V30	100 / 83 / 376	48" x 66" x 9" / 1.2 x 1.7 x .2	22 x 25 x 7 / .6 x .6 x 1.5	19 / 8.6	23 / 10.4	*
BT-150V30	150 / 125 / 568	60" x 60" x 12" / 1.5 x 1.5 x .3	22 x 26 x 8 / .6 x .7 x .2	22 / 10	26 / 11.8	*
BT-250V30	250 / 208 / 946	60" x 84" x 14" / 1.5 x 2.1 x .4	22 x 32 x 8 / .6 x .8 x .2	27 / 12.3	31 / 14	*
BT-500V30	500 / 416 / 1892	84" x 108" x 16" / 2.1 x 2.7 x .4	25 x 32 x 9 / .6 x .8 x .2	33 / 15	37 / 16.8	*
BT-750V30	750 / 625 / 2839	99" x 114" x 16" / 2.5 x 2.9 x .4	25 x 35 x 9 / .6 x .9 x .2	49 / 22.2	53 / 24	*
BT-1000V30	1000 / 833 / 3785	9' x 11' x 16" / 2.7 x 3.4 x .4	40 x 48 x 14 / 1 x 1.2 x .4	60 / 27.2	95 / 43	* = will ship via UPS
BT-1250V30	1250 / 1041 / 4731	9'6" x 12'4" x 18" / 2.9 x 3.8 x .5	40 x 48 x 14 / 1 x 1.2 x .4	68 / 30.9	103 / 46.7	
BT-1500V30	1500 / 1249 / 5678	10' x 14' x 18" / 3 x 4.3 x .5	40 x 48 x 15 / 1 x 1.2 x .4	78 / 35.4	113 / 51.3	
BT-2000V30	2000 / 1666 / 7570	10'6" x 14'6" x 22" / 3.2 x 4.4 x .6	40 x 48 x 18 / 1 x 1.2 x .5	82 / 37.2	117 / 53	
BT-2500V30	2500 / 2082 / 9463	12' x 14'6" x 24" / 3.7 x 4.4 x .6	40 x 48 x 18 / 1 x 1.2 x .5	91 / 41.3	126 / 57.2	
BT-3000V30	3000 / 2498 / 11355	13'6" x 15' x 24" / 4.1 x 4.6 x .6	40 x 48 x 22 / 1 x 1.2 x .6	105 / 47.6	140 / 63.5	
BT-4000V30	4000 / 3330 / 15140	14' x 18' x 27" / 4.3 x 5.5 x .7	40 x 48 x 24 / 1 x 1.2 x .6	128 / 58.1	162 / 73.5	
BT-5000V30	5000 / 4164 / 18925	15'6" x 19'6" x 27" / 4.7 x 5.9 x .7	40 x 48 x 26 / 1 x 1.2 x .7	159 / 72.1	194 / 88	
BT-6000XR30	6000 / 4996 / 22710	16'6" x 20' x 30" / 5 x 6 x .8	40 x 48 x 28 / 1 x 1.2 x .7	197 / 89.4	232 / 105.2	
BT-10000XR30	10000 / 8327 / 37850	20' x 24' x 36" / 6 x 7.3 x .9	40 x 48 x 30 / 1 x 1.2 x .8	284 / 128.8	324 / 147	
BT-20000U40	20000 / 16654 / 75700	22' x 31' x 48" / 6.7 x 9.5 x 1.2	42 x 48 x 48 / 1.1 x 1.2 x 1.2	551 / 250	626 / 284	

Bladder tanks have many practical uses

- Drinking water storage for disaster area victims (NFS 61 approved)
- Waste water storage (gray water)
- Rainwater collection tanks for irrigation systems
- Nurseries
- Agricultural (Livestock watering or insecticide application)
- Fire fighting
- Gray water storage (pressure washing & recovery systems)
- Black water storage (sewage)
- Rec vehicle tanks (drinking water and black water storage)
- Pickup truck tanks
- Flat bed truck tanks (transporting drinking or waste water)
- Railcar tanks
- Fuel storage tanks (Diesel, Jet A, etc). Static use only.
- Food grade products, such as molasses, wine, olive oil, vegetable oil, etc



Fittings & Valves

- Sizes .75" - 6", male or female rigid threads
- Fire hose threads (female swivels with NH threads available)
- Ball valves (PVC, brass, stainless steel)
- Camlock fittings (PVC, aluminum, brass, stainless steel)
- Flanges (PVC, aluminum, stainless steel. Female or male threads)
- Storz fittings 2" - 6"
- Flame arrestors
- Vents (aluminum double "T" style, PVC with screen)
- Access panels
- Manway covers
- Hydrocarbon filters
- All types of hoses available (PVC, NSF 61, Fuel Grade)
- All sizes & types of pumps available (water or fuel transfer)

Husky offers many types of fittings for our bladder tanks. If we don't manufacture it, we can get it. We manufacture the majority of our flanges, swivel couplings, access plates, and fittings to ensure that they meet our commitment to quality control.

Husky bladder tanks are built with quality and precision in mind. We use only top-quality, first-grade materials for all our bladder tanks. Every Husky bladder tank is tested and approved by one of our quality control team members. When leaving our facility, all bladders are tagged with an inspection ticket showing the date of the test, part number, and the inspector's initials. Husky has an unprecedented 3 year manufacturer's warranty on all welded seams.

Put a Husky bladder tank on your team today!

Decontamination Shower

- PVC construction with quick-connect cam-lock fittings
- Four shower nozzles plus separate hand-held spray nozzle
- 4.2 gpm nozzles at 40 psi
- Inlet connection, garden hose threads
- 42"x36"x84" when assembled. Weighs 70 lbs.
- Securing straps and storage bag included
- Three-stage decon shower system available
- Sizes (ft): 5x5x1, 4x4x1, 4x8x1

Options

- "Quick Fix" field repair kits
- Elevation grids
- Ground covers
- Shower curtains are optional



Folding Frame Decontamination Pool

- Steel frame, 3/8" od 14 gage HREW P&O carbon steel
- Alum frame, 1"x1"x.125" 6061-T6 aircraft-quality aluminum
- Laser-cut hinges designed to be strongest in the industry
- Liner 22 oz PVC or XR-5 8130 30oz (chemical & fuel resistant)
- PVC is blue (Opt. red, yellow, green, black, & orange)
- XR-5 8130 color is black
- Folds down to 7" wide for easy storage
- Sizes (ft): 3x3x1, 4x4x1, 4x8x1, 5x5x1, 6x12x1 (other sizes and heights available)

Options

- 7" diameter drain tube
- Bulkhead drain fittings with plugs or ball valves
- Fiberglass grating for the floor
- Carry bag
- Repair kits
- Elevation grids



Part Numbers:
Steel: STFDP-33 (3x3x1), STFDP-44 (4x4x1),
STFDP-48 (4x8x1), etc
Alum: ALFDP-33 (3x3x1), ALFDP-44 (4x4x1),
ALFDP-48 (4x8x1), etc

Air Wall Type Decontamination Pool

- No frame or foam collars. Lightweight.
- 40 oz PVC, XR-5 8130 (chemical & fuel resistant)
- PVC is blue (Opt. red, yellow, green, black, & orange)
- XR-5 8130 is black
- Valves: Schrader, pressure relief, & boat valves (check)
- Folds up to compact storage size (storage bag included)
- Sizes (ft): 3x3x1, 4x4x1, 4x8x1, 5x5x1, 6x12x1 (other sizes and heights available). Dimension listed is inside diameter.

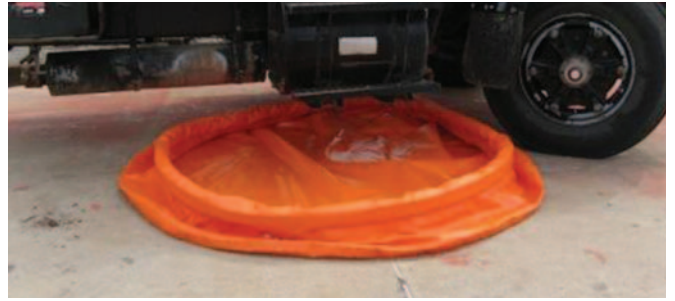
Options

- Emergency field repair kit. Repairs the air chamber on-site and ready for use in minutes.
- Elevation grids available for the floors



Self-Supporting Type Decontamination Pools

- No frame. Lightweight.
- Unique foam flotation collar allows side walls to automatically rise with the level of liquid entering pool
- Pool material: 18oz PVC, 22oz PVC, XR-5 8130 (chemical & fuel resistant for long-term use)
- PVC is blue (Opt. red, yellow, green, black, & orange)
- XR-5 8130 color is black
- Folds up to compact storage size (storage bag included)



Options

- Bulkhead drain fittings with plug or ball valves
- Repair kits

Sizes: 3x3x1, 4x4x1, 4x8x1, 5x5x1, 6x12x1
Other sizes & heights available

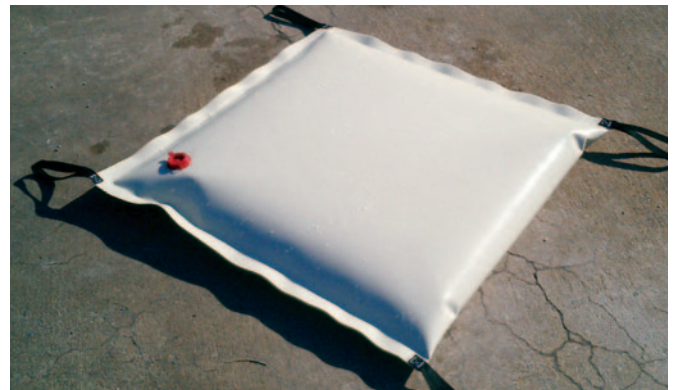
Water or Chemical Waste Bladder Reservoirs

- Sizes starting at 25 gal capacity
- 30 oz per square yard acrylic-coated PVC
- Any type of fittings available
- Great for storing and transporting recovered water or chemical waste
- Storage bag included
- Husky can design & build decon pools to meet any requirements. Call us today for a quote at 800-260-9950.



Drain Cover

- Materials: 22 oz, 30 oz, & 40 oz PVC, 40 oz Urethane
- PVC colors: orange, yellow, red, blue, black, green
- Urethane color: tan
- Handles located in all four corners
- One banjo bulkhead fitting with plug for filling. Fill with water, and it's ready to use.
- Great for keeping unwanted waste from going down the wrong drain.
- Custom sizes available!



In the Part Number, the second number represents the size, the third number represents the material's ounces per sq. yd.

Part No.	Size	Part No.	Size	Part No.	Size
HDC-22-22	2' x 2'	HDC-22-30	2' x 2'	HDC-22-V40	2' x 2'
HDC-33-22	3' x 3'	HDC-33-30	3' x 3'	HDC-33-V40	3' x 3'
HDC-44-22	4' x 4'	HDC-44-30	4' x 4'	HDC-44-V40	4' x 4'
HDC-55-22	5' x 5'	HDC-55-30	5' x 5'	HDC-55-V40	5' x 5'
HDC-66-22	6' x 6'	HDC-66-30	6' x 6'	HDC-66-V40	6' x 6'

Water Dike

- Materials: 22, 30 oz. PVC, 40 oz. Urethane
- One banjo bulkhead fitting with plug for filling. Fill with water, and it's ready to use.
- Sizes: 6" diameter by 10', 20', 50', 100'
- Can be built to any length required
- Drain covers and water dikes are more effective on smooth surfaces. A rough or porous surface will allow some leak-through.



In the Part Number, the second number represents the size, the third number represents the material's ounces per sq. yd. The below part numbers are designated for 22 oz. material.

Part No.	Size	Part No.	Size	Part No.	Size
HWD-610-22	6" dia. x 10'	HWD-610-30	6" dia. x 10'	HWD-610-V40	6" dia. x 10'
HWD-620-22	6" dia. x 20'	HWD-620-30	6" dia. x 20'	HWD-620-V40	6" dia. x 20'
HWD-630-22	6" dia. x 30'	HWD-630-30	6" dia. x 30'	HWD-630-V40	6" dia. x 30'
HWD-640-22	6" dia. x 40'	HWD-640-30	6" dia. x 40'	HWD-640-V40	6" dia. x 40'
HWD-650-22	6" dia. x 50'	HWD-650-30	6" dia. x 50'	HWD-650-V40	6" dia. x 50'

Economical solution to waste water control when cleaning machinery, windows and equipment to contain the liquid run off from escaping to unwanted territory.

Folding Frame Tank

- 500-5,000 gallon capacities. Custom sizes available!
- Steel or aluminum frames
- Steel frame material: 7/8" od 14 gage HREW P&O round tube. Square tube available.
- Aluminum frame material: 1"x1"x.125" 6061-T6 aircraft-quality square tube
- Double folding frames for easier handling & storage
- Chemical and fuel resistant materials. Potable NSF 61 approved materials.
- Exclusive Easy Lift Handles on the floor of our liners (US Patent No. 8,746,478 & other patents pending)
- Materials: XR-5, XR-5B, XR-3PW, all Urethanes, PVCs, and PVC/Urethane blends
- Replaceable liners
- Top covers & ground covers available
- Easy set up. No assembly! Just unfold & go!
- Great for oil spill clean up, chemical or fuel storage, potable or waste water storage
- The ultimate portable firefighting tank



Husky offers custom sizes and designs on our water dikes and folding frame tanks. Just let us know what you need, and we would be glad to create a custom tank or dike for your business.

Call us today for more information! 800-260-9950

Self-Supporting Tank

- 500-20,000 gallon capacities. Custom sizes available!
- No framework means less weight with same capacity and allows for easier storage
- Self-rising side walls
- Unique flotation collar
- Foam collar is standard
- Optional air collar comes with tire valve, pressure relief valve, & boat check valve
- All air collar tanks come with an emergency field repair kit
- Chemical & fuel resistant materials. Potable NSF 61 approved materials.
- Materials: XR-5, XR-5B, XR-3PW, all Urethanes, PVCs, & PVC/Urethane blends, EXLON®
- Top covers & ground covers available
- Easy set up. No assembly! Just unfold & go!
- Great for oil spill clean up, chemical or fuel storage, potable or waste water storage
- The ultimate portable firefighting tank
- Storage bag included
- Call for more info!



AQUA Tank (Aluminum Quick Assemble Tank)

- Type I, II, or III
- 500-3000 gallon capacities. Custom sizes available!
- All aluminum frame pieces & liner fit into a small duffle-type storage bag
- Quick & easy assembly
- Chemical & fuel resistant materials. Potable NSF 61 approved materials.
- Materials: XR-5, XR-5B, XR-3PW, all Urethanes, PVCs, and PVC/Urethane blends, EXLON®
- Replaceable liners
- Storage bag included



Interested in any of our products? Contact us today!

www.huskyportable.com | sales@huskyportable.com

7202 SE International Ct, PO Box 3404, Bartlesville, OK 74006

Phone: 918-333-2000 | Toll Free: 800-260-9950

Fax: 918.333.2004

Contact Husky Portable Containment

We are committed to providing our customers with the very best and highest-quality products in the industry.

Contact us today for more information about our primary & secondary containment products.

sales@huskyportable.com

www.huskyportable.com

7202 SE International Ct, PO Box 3404, Bartlesville, OK 74006

Phone: 918.333.2000 | Toll Free: 800.260.9950 | Fax: 918.333.2004

Like us on



We accept

